



# SOLAIR® COMFORT

Lateral Arm Retractable Awning System



## MANUAL & INSTALLATION INSTRUCTIONS



## WELCOME

# SOLAIR® COMFORT

## Lateral Arm Retractable Awning System

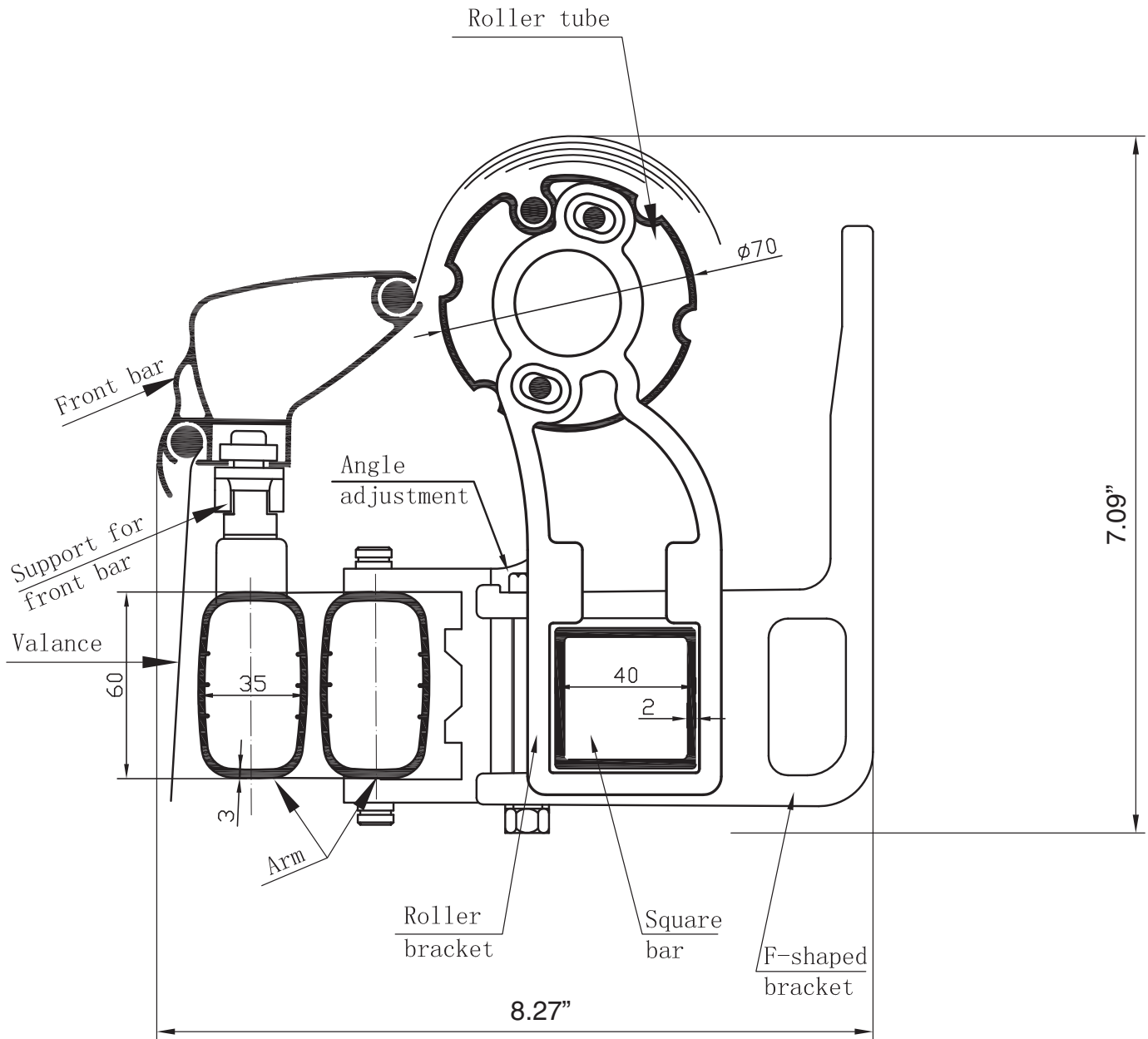
The Solair® Comfort Lateral Arm Retractable Awning offers many unique features and will provide years of service and sun protection. The following advantages make this an easy choice to enhance your outdoor living experience.

- Available in three widths: 12'1", 15'8" and 19'5".
- Unique hinged front bar attachment offers flexibility and reduces stress on the arms.
- Front bar guide pins ensure even retraction of the arms.
- Available in three stock Sunbrella® patterns - Black, Forest Green and Heather Beige. Can be customized with a wide selection of patterns available from your local awning retailer.
- Large arms with double cable design provide superior strength and a tight fabric fit.
- Solair® Comfort retractable awnings carry the internationally recognized TUV certification signifying their quality, durability and workmanship.
- Warranty coverage includes: 3-year limited warranty on the Solair® Comfort Retractable Awning framework. 10-year limited warranty on Sunbrella® fabrics. All warranties are good from the day of purchase.





# CROSS SECTION OF ASSEMBLED SOLAIR® COMFORT



**Cross section of Assembled Solair® Comfort System in Retracted Position**  
(Illustration not to full scale)

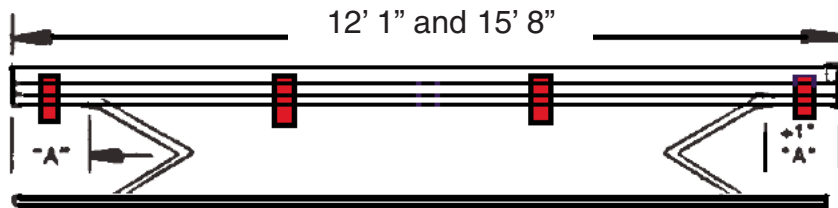


# AWNING SIZE CONFIGURATIONS

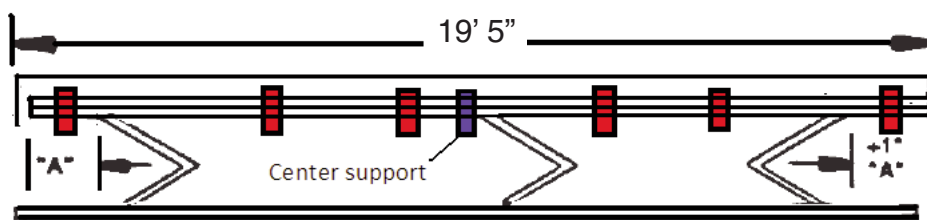
## Recommended Arm, Mounting Bracket Arrangement

“A” = 1” minimum to 20” maximum—approximate rule of thumb 1” per foot of over-all awning width up to 20”.

Each end wall bracket must be placed within 12” of an arm, preferably between the roller bracket and the arm. This 12” rule also applies to all other arms. If this rule cannot be adhered to an additional wall bracket must be used. All brackets must be mounted into studs or structural members.



2 ARMS; 4 BRACKETS



3 ARMS; 6 BRACKETS

**Note:** Center Support should be installed on a fabric seam as close to the center of the unit as possible



## CARE OF YOUR RETRACTABLE AWNING SYSTEM

This product will provide many years of satisfactory service if cared for properly. Proper maintenance is important if maximum life of the product is desired. Routine care is quite simple but certain recommended procedures should be followed.

1. Your awning should be in the retracted position when you are not on the premises. The awning should not be extended during high winds, or rain storms.
2. For extended storage periods, make sure your awning is dry and clean before retracting.
3. If installation is near salt water, please wash the awning twice monthly with fresh water and spray all moving parts with silicone. Be careful not to spray the fabric.
4. Keep dirt, leaves and other debris from accumulating on the awning surface. See separate manufacturer's warranty on fabric care.

## NOTES